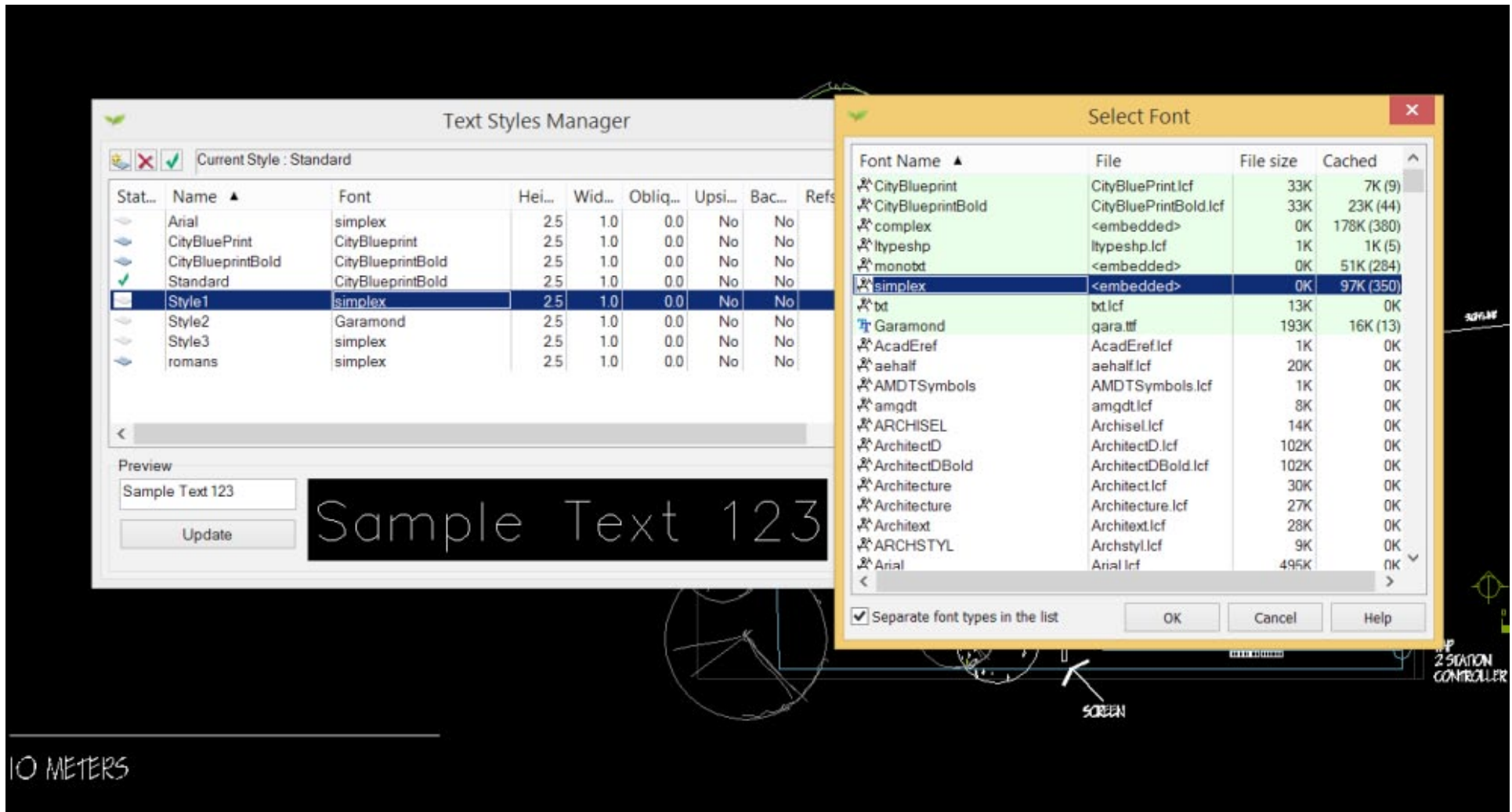


Text in gCADPlus drawings

Text entities in gCADPlus drawings are created using different font types. These fonts can be true CAD fonts such as gCADPlus fonts, AutoCAD SHX fonts or Windows fonts. The actual text entity is created using the TEXT, MTEXT or WTEXT command and is drawn in a style dictated by the current text style. Several text styles are built into gCADPlus and are called standard, simplex, comlex and mono. These styles cannot be removed.

It is possible to create new styles using a font chosen from quite a long list. The figure below shows the gCADPlus TextStyles Manager and the CAD font simplex currently associated with a style called Style1. A Windows font Garamond also appears in the list its distinctive blue and black TT icon. The green tick shows the text style (standard in this case) that's currently in operation - the default.



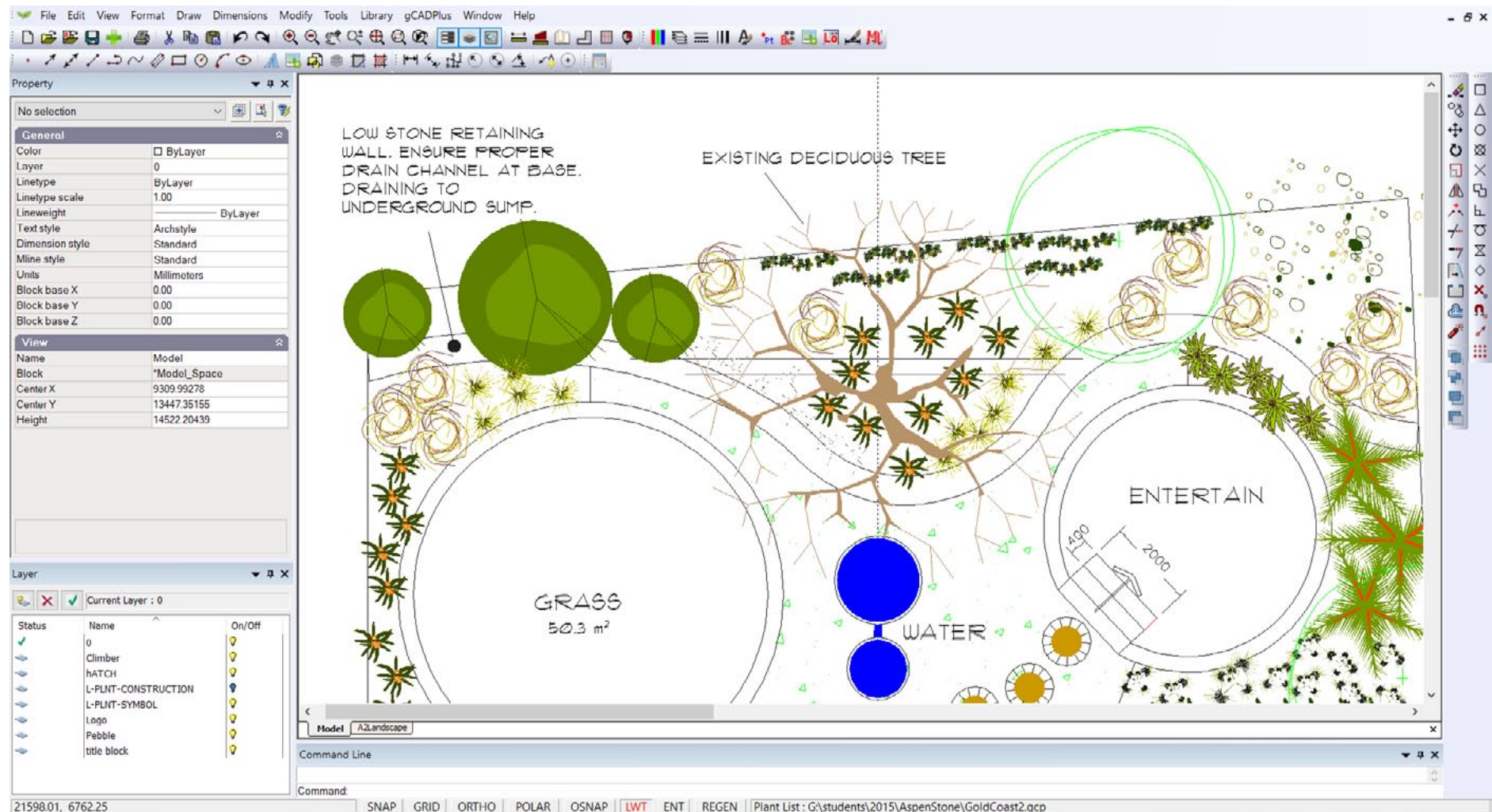
Creating a new text style

Styles are created via Format > Text Styles > Text Style Manager and selecting New. The figure above shows that a style called Style1 has been created and it uses the font Simplex. This is a CAD font and a sample of text drawn with that font is shown in the Preview box of the Text Styles Manager. Notice that Style2 uses a Windows TrueType font called Garamond. So in this example, one style uses a CAD font and the other a Windows font. Note the different icon associated each font.

Tip: Where possible, it is best to use CAD fonts as these enable the text to be drawn with precision irrespective of the magnification factor. Magnifying Windows fonts sometimes results in blurry text.

This movie shows how to manage text in a drawing.

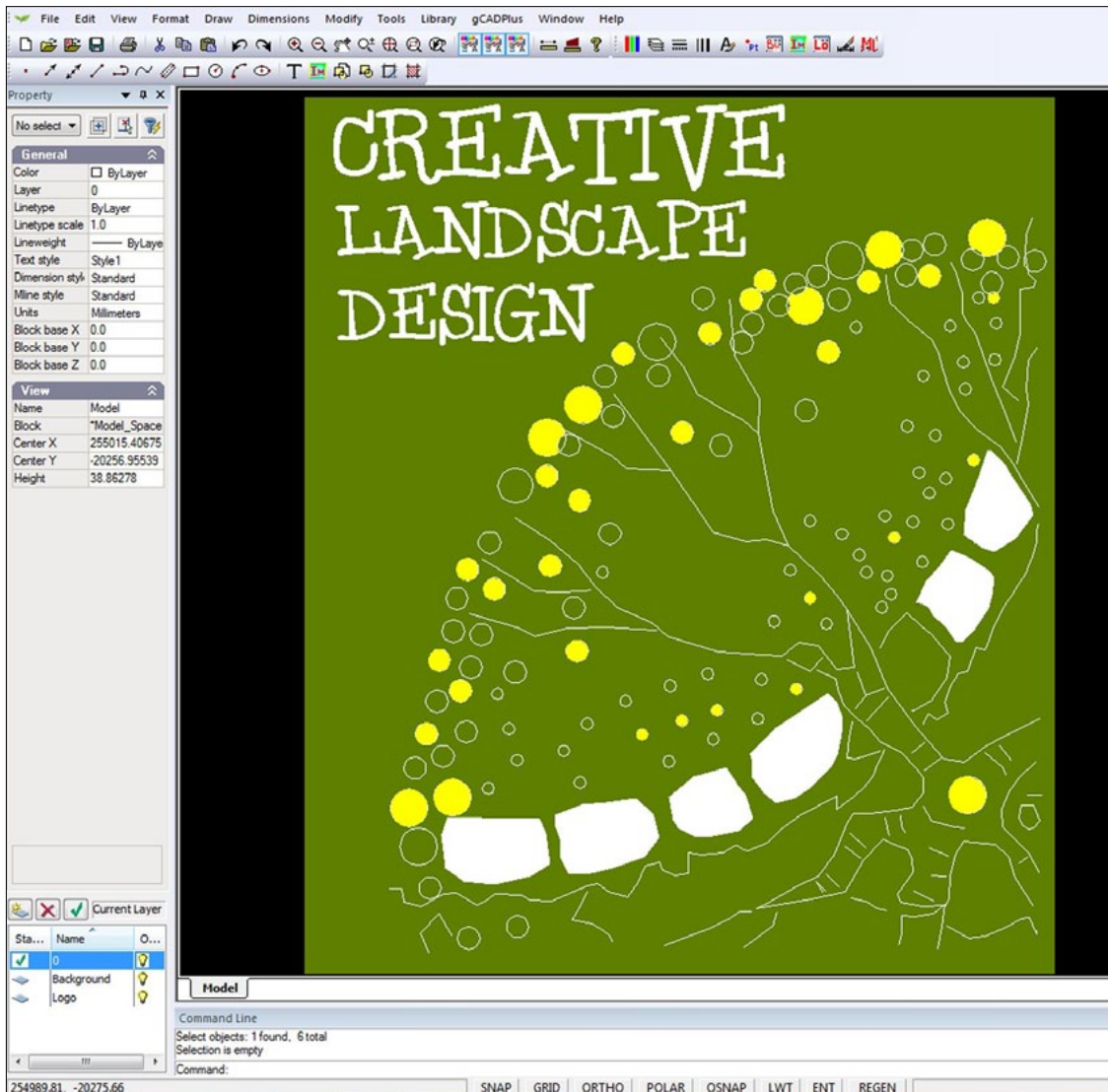
This movie provides another view of the use of text in landscape designs. The figure below shows an example of the use of a handlettered CAD font.



Hand lettering styles

There are a number of hand lettering CAD text fonts available in gCADPlus that can be used to give some flair and personality to your designs. Finding a style that suits your drawing style and incorporating it into your gCADPlus template drawings such that it is always available, will help to create your 'signature' look and feel. The figure below show some examples of the use of computer hand lettering CAD based styles.

In addition to those CAD hand fonts provided with gCADPlus, many more TrueType Windows fonts are freely available on the Internet. Once installed into the Windows fonts folder, gCADPlus will allow any Windows font to be used as a text style. You may need to re-start gCADPlus after a new Windows font has been installed.



CONCERTINA DOORS

NATURAL REED FENCE

ARTWORK

COMMISSION SCULPTURE

CHOISYA TERNATA

TRACHELOSPERMUM JASMINOIDES

PYRUS CALLERYANA
'Capital'

DIANELLA TASMANICA
'Emerald Arch'

TRACHELOSPERMUM

GLEDITSIA TRICANTHOS
'Elegantissima'

Hand Fonts

ARCHISEL 01234567890 ABCDEFGHIJKLMNOPQRSTUVWXYZ abcdefghijklmnopqrstuvwxyz
 ARCHSTYL 01234567890 ABCDEFGHIJKLMNOPQRSTUVWXYZ abcdefghijklmnopqrstuvwxyz
 Bradeau Hand 01234567890 ABCDEFGHIJKLMNOPQRSTUVWXYZ abcdefghijklmnopqrstuvwxyz
 Bradeck Alt 01234567890 ABCDEFGHIJKLMNOPQRSTUVWXYZ abcdefghijklmnopqrstuvwxyz
 CiglaFont 01234567890 ABCDEFGHIJKLMNOPQRSTUVWXYZ abcdefghijklmnopqrstuvwxyz
 CiglaFontBali 01234567890 ABCDEFGHIJKLMNOPQRSTUVWXYZ abcdefghijklmnopqrstuvwxyz
 Gensow Sans 01234567890 ABCDEFGHIJKLMNOPQRSTUVWXYZ abcdefghijklmnopqrstuvwxyz
 Gensow 01234567890 ABCDEFGHIJKLMNOPQRSTUVWXYZ abcdefghijklmnopqrstuvwxyz
 Desr-yek 01234567890 ABCDEFGHIJKLMNOPQRSTUVWXYZ abcdefghijklmnopqrstuvwxyz
 K6 DR0PS JUPITER 01234567890 ABCDEFGHIJKLMNOPQRSTUVWXYZ abcdefghijklmnopqrstuvwxyz
 ArchitectD 01234567890 ABCDEFGHIJKLMNOPQRSTUVWXYZ abcdefghijklmnopqrstuvwxyz
 ArchitectD Bold 01234567890 ABCDEFGHIJKLMNOPQRSTUVWXYZ abcdefghijklmnopqrstuvwxyz
 Architecture 01234567890 ABCDEFGHIJKLMNOPQRSTUVWXYZ abcdefghijklmnopqrstuvwxyz
 Anticase 01234567890 ABCDEFGHIJKLMNOPQRSTUVWXYZ abcdefghijklmnopqrstuvwxyz
 AnticAD 01234567890 ABCDEFGHIJKLMNOPQRSTUVWXYZ abcdefghijklmnopqrstuvwxyz
 Hand01 01234567890 ABCDEFGHIJKLMNOPQRSTUVWXYZ abcdefghijklmnopqrstuvwxyz
 Khasa1 01234567890 ABCDEFGHIJKLMNOPQRSTUVWXYZ abcdefghijklmnopqrstuvwxyz
 Kasky 01234567890 ABCDEFGHIJKLMNOPQRSTUVWXYZ abcdefghijklmnopqrstuvwxyz
 Kasky Bold 01234567890 ABCDEFGHIJKLMNOPQRSTUVWXYZ abcdefghijklmnopqrstuvwxyz
 Wesley 01234567890 ABCDEFGHIJKLMNOPQRSTUVWXYZ abcdefghijklmnopqrstuvwxyz

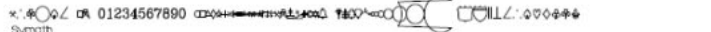


CAD Fonts

Standard 01234567890 ABCDEFGHIJKLMNOPQRSTUVWXYZ abcdefghijklmnopqrstuvwxyz
 AcadeHalf 01234567890 ABCDEFGHIJKLMNOPQRSTUVWXYZ abcdefghijklmnopqrstuvwxyz
 CDM NC 01234567890 ABCDEFGHIJKLMNOPQRSTUVWXYZ abcdefghijklmnopqrstuvwxyz
 C4m 01234567890 ABCDEFGHIJKLMNOPQRSTUVWXYZ abcdefghijklmnopqrstuvwxyz
 BigFont 01234567890 ABCDEFGHIJKLMNOPQRSTUVWXYZ abcdefghijklmnopqrstuvwxyz
 Dim 01234567890 ABCDEFGHIJKLMNOPQRSTUVWXYZ abcdefghijklmnopqrstuvwxyz
 exthalf 01234567890 ABCDEFGHIJKLMNOPQRSTUVWXYZ abcdefghijklmnopqrstuvwxyz
 extslim2 01234567890 ABCDEFGHIJKLMNOPQRSTUVWXYZ abcdefghijklmnopqrstuvwxyz
 q12f13 01234567890 ABCDEFGHIJKLMNOPQRSTUVWXYZ abcdefghijklmnopqrstuvwxyz
 IsoCP 01234567890 ABCDEFGHIJKLMNOPQRSTUVWXYZ abcdefghijklmnopqrstuvwxyz
 Geniso 01234567890 ABCDEFGHIJKLMNOPQRSTUVWXYZ abcdefghijklmnopqrstuvwxyz
 Geniso 01234567890 ABCDEFGHIJKLMNOPQRSTUVWXYZ abcdefghijklmnopqrstuvwxyz
 TXT 01234567890 ABCDEFGHIJKLMNOPQRSTUVWXYZ abcdefghijklmnopqrstuvwxyz
 MONDXTX 01234567890 ABCDEFGHIJKLMNOPQRSTUVWXYZ abcdefghijklmnopqrstuvwxyz
 SIMPLEXB 01234567890 ABCDEFGHIJKLMNOPQRSTUVWXYZ abcdefghijklmnopqrstuvwxyz

Sans Serif Fonts

And 01234567890 ABCDEFGHIJKLMNOPQRSTUVWXYZ abcdefghijklmnopqrstuvwxyz
 Arial Narrow 01234567890 ABCDEFGHIJKLMNOPQRSTUVWXYZ abcdefghijklmnopqrstuvwxyz
 KG Lego House 01234567890 ABCDEFGHIJKLMNOPQRSTUVWXYZ abcdefghijklmnopqrstuvwxyz
 ComicSans 01234567890 ABCDEFGHIJKLMNOPQRSTUVWXYZ abcdefghijklmnopqrstuvwxyz
 Pragmat 01234567890 ABCDEFGHIJKLMNOPQRSTUVWXYZ abcdefghijklmnopqrstuvwxyz
 Syllus BT 01234567890 ABCDEFGHIJKLMNOPQRSTUVWXYZ abcdefghijklmnopqrstuvwxyz

Special

x, @, O, Q, R 01234567890 
 Symath
 AMGDT 01234567890 ABCDEFGHIJKLMNOPQRSTUVWXYZ 
 AMGDT
 人 01234567890 
 Gothic

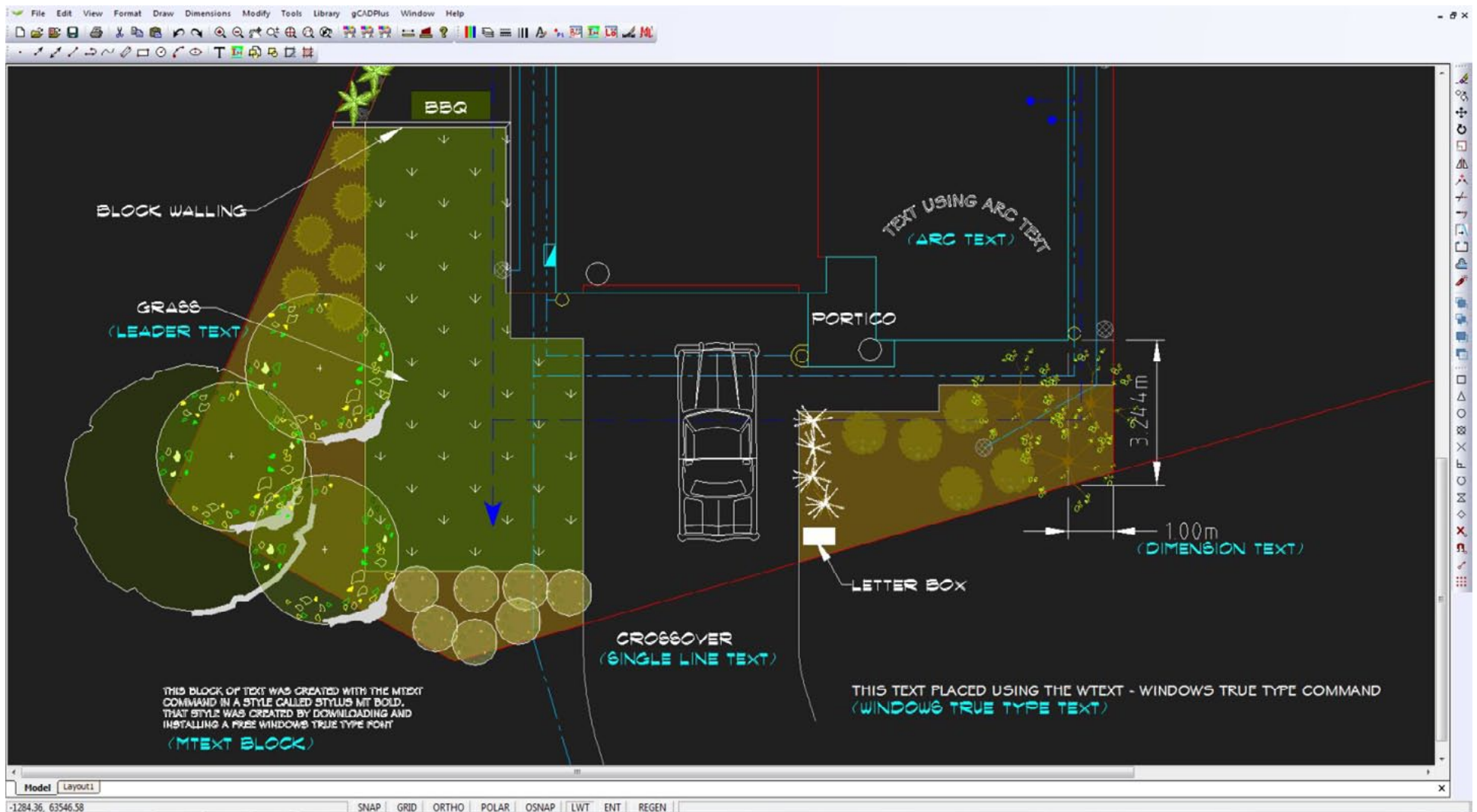
Serif Fonts

Courier New 01234567890 ABCDEFGHIJKLMNOPQRSTUVWXYZ abcdefghijklmnopqrstuvwxyz
 Times New Roman 01234567890 ABCDEFGHIJKLMNOPQRSTUVWXYZ abcdefghijklmnopqrstuvwxyz
 Italic B 01234567890 ABCDEFGHIJKLMNOPQRSTUVWXYZ abcdefghijklmnopqrstuvwxyz
 Peteri 01234567890 ABCDEFGHIJKLMNOPQRSTUVWXYZ abcdefghijklmnopqrstuvwxyz

Some of the text fonts available in gCADPlus grouped according to font type.

Use of text use in drawings

Text conveys important information in landscape drawings. It is used to label symbols representing plant species, in dimensioning styles, in title blocks and to add specification notes or to make other annotations.

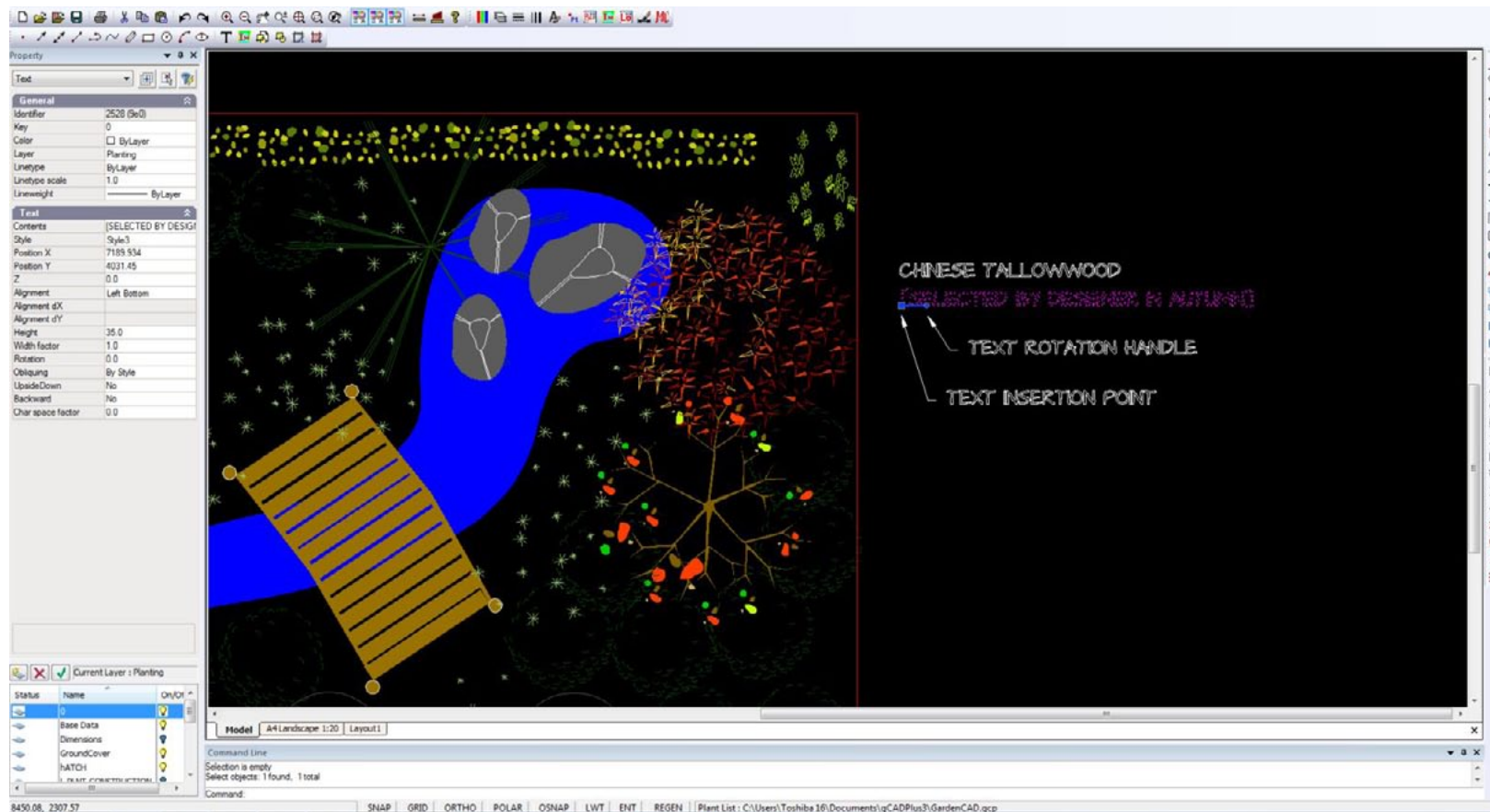


Single line text, multi line text, Windows True Type text and arc text are all used in this drawing. Some lettering styles here use CAD fonts, others use Windows fonts.

Types of text objects

To reiterate, text can be applied in a number of different entities:

- Single line text;
- Multi line text;
- Arc text; and
- Windows TrueType text



Single-line text showing insertion point and rotation handle. The properties box enables changes to be made to alignment - left, right, center justified etc.

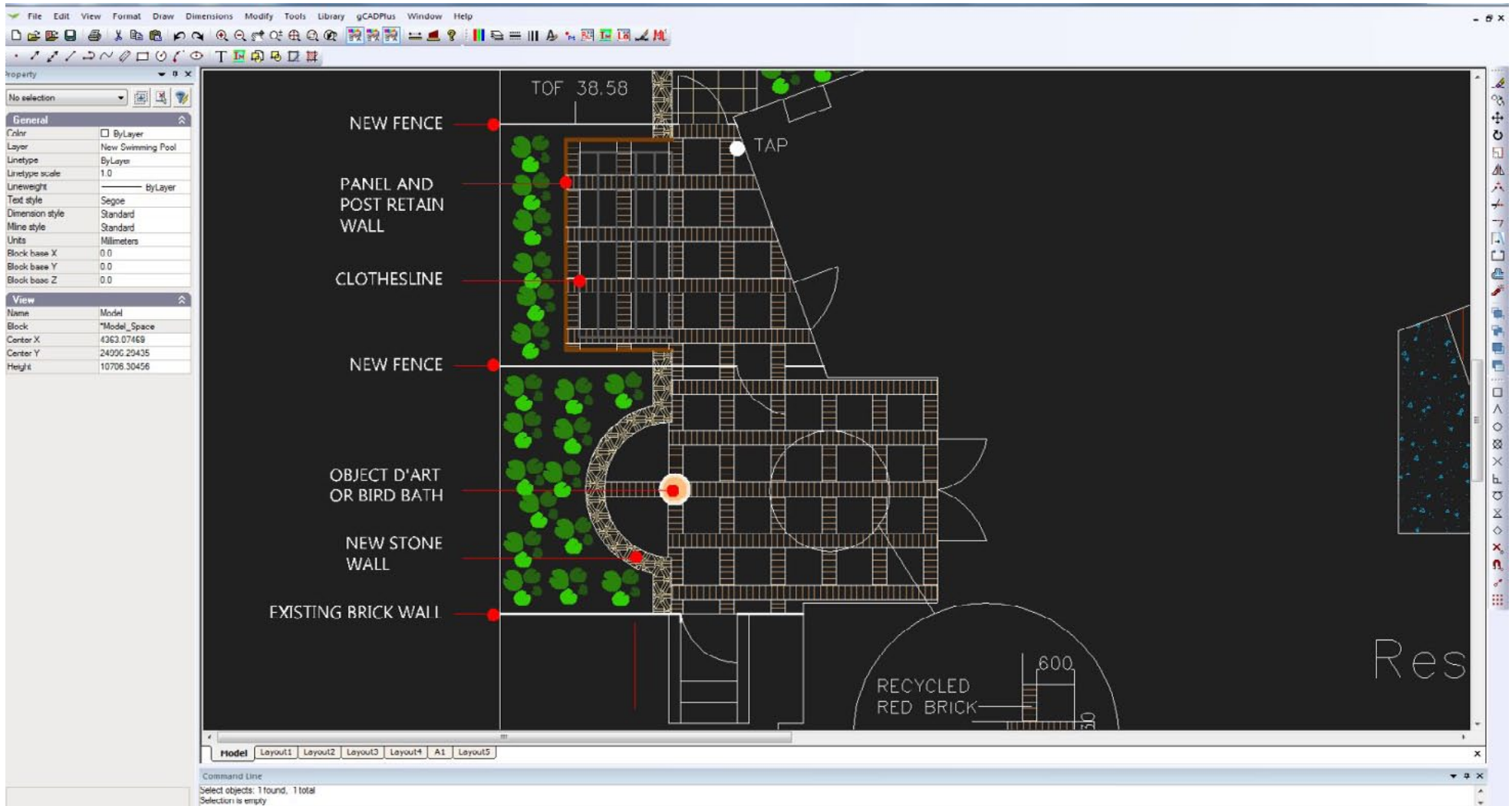


Select single line text from the draw drop menu, draw toolbar or type the T shortcut.

Single line text

Single-line text is an individual line of text contained in one text object (entity). It is useful for labels and short notes. Most gCADPlus drafters will use single-line text as their main text entity in a drawing. It is important to keep in mind that text is placed using the current text style (see later).

Tip: The text style chosen (and the accompanying font) has a major influence on the display. Different fonts will show different height, even when the height setting is the same.



The use of upper case is easier for construction teams to read plans. It is also possible to use a font that's all uppercase for this purpose.

Placing text

The single-line text command can be selected (started) from the Draw drop down menu, the Draw toolbar, by typing TEXT or the T shortcut in the command area.

When you create text, end each line of text by pressing the enter key. The insertion point of a single line text object is a point object indicating the coordinate location for placing the text. The text height is a real number defining the height of the upper-case characters in drawing units.

The usual sequence of prompts are as follows:

- Specify the insertion point for the first character;
- Specify the height of the text;
- Specify the text rotation angle;
- Type the text, and then press Enter at the end of each new line; and
- Press enter again to complete the command.

Tip: If you have previously placed a line of text try hitting the ENTER key when asked for the height and angle of text. The height and angle will remain the same as they were in the previous entry.

Aligning text

If you have several lines of text drawn as single objects, use the align text tool in the Modify drop down menu to justify (line up) the text. Note that text objects can be justified left, right or bottom.



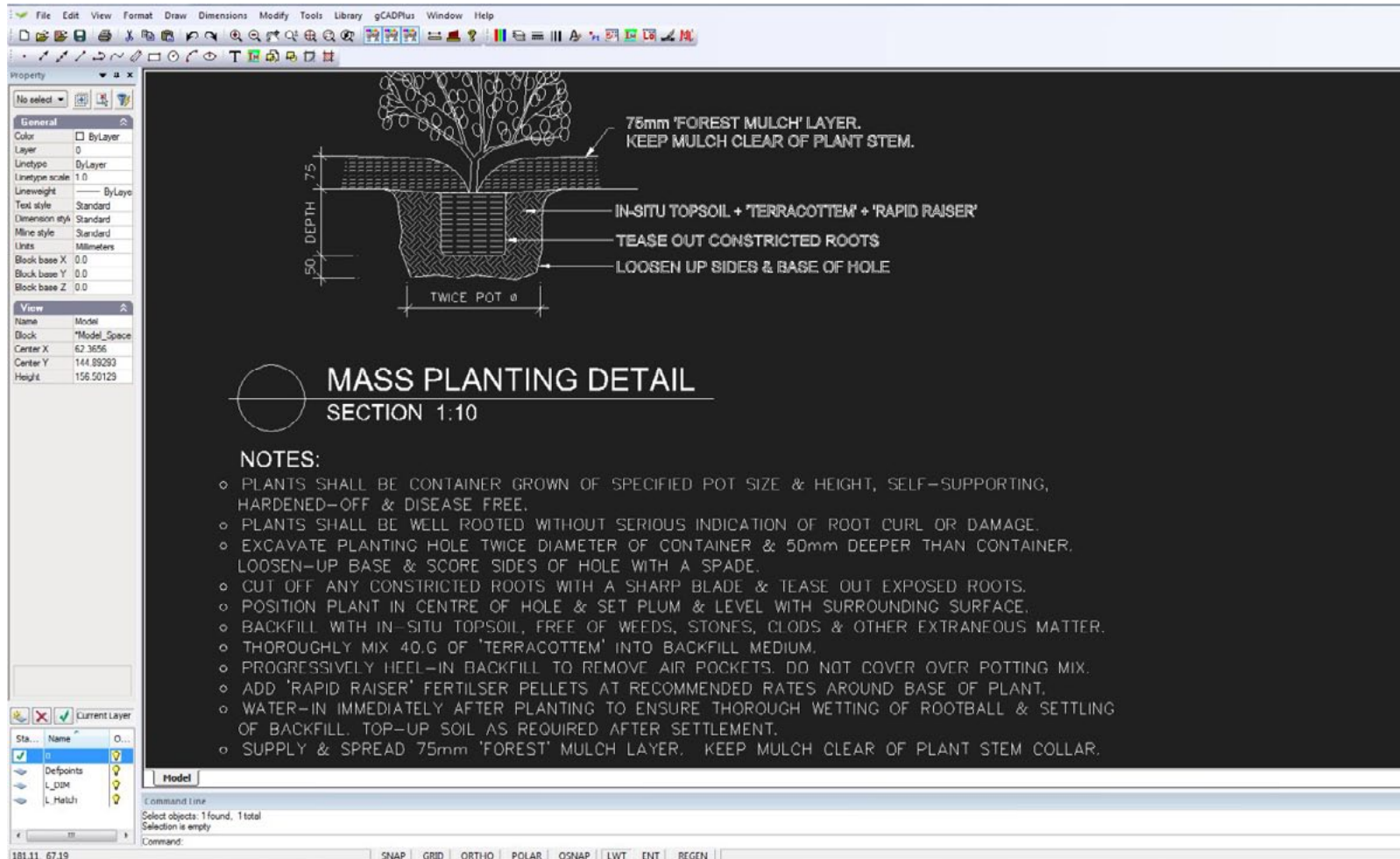
Here the align text tool is used to right justify a series of text objects that were originally arranged as show on the left of screen.

We encourage the use of upper case text where possible as its easier to read on a paper plan when on site.

A construction team often works under difficult circumstances - paper prints of drawings get smudged, dirty, wet and suffer a lot in the build phase. Therefore, it is recommended that you use upper case annotations and notes where possible as they are much easier to read .

Paragraph text (MTEXT)

If you have notes that exceed several lines, use 'paragraph text' tool. Paragraph text consists of one or more lines of text or paragraphs that fit within a specified boundary. Each paragraph text entity you create is treated as a single entity, regardless of the number of individual paragraphs or lines of text it contains.



Here the text under the heading NOTES is applied with the MTEXT command.

To create paragraph text, first determine the paragraph's boundary width by specifying the opposite corners of a rectangle. The text automatically wraps so that it fits

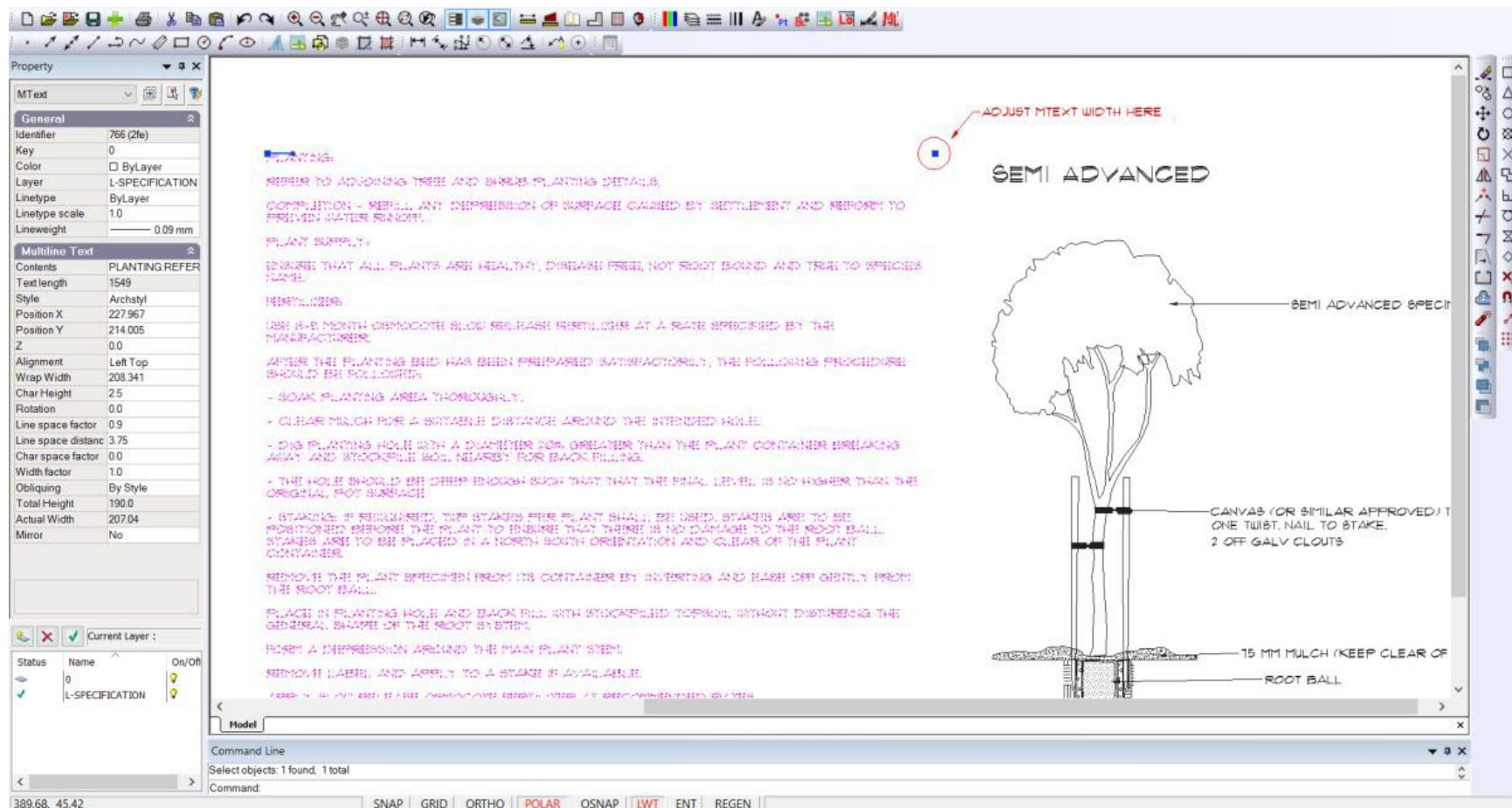
within this rectangle. The first corner of the rectangle determines the default attachment point of the paragraph text. You can change the location of the attachment point in reference to the rectangle, and you can also determine the direction in which text flows within the rectangle. It is also possible to select the text and paragraph format, text style, text height, and the rotation angle of the entire paragraph text entity.

To add a bullet to an MTEXT type the following code in front of the text string: `{\symbol\b0|i0|c2|p18;- }`.

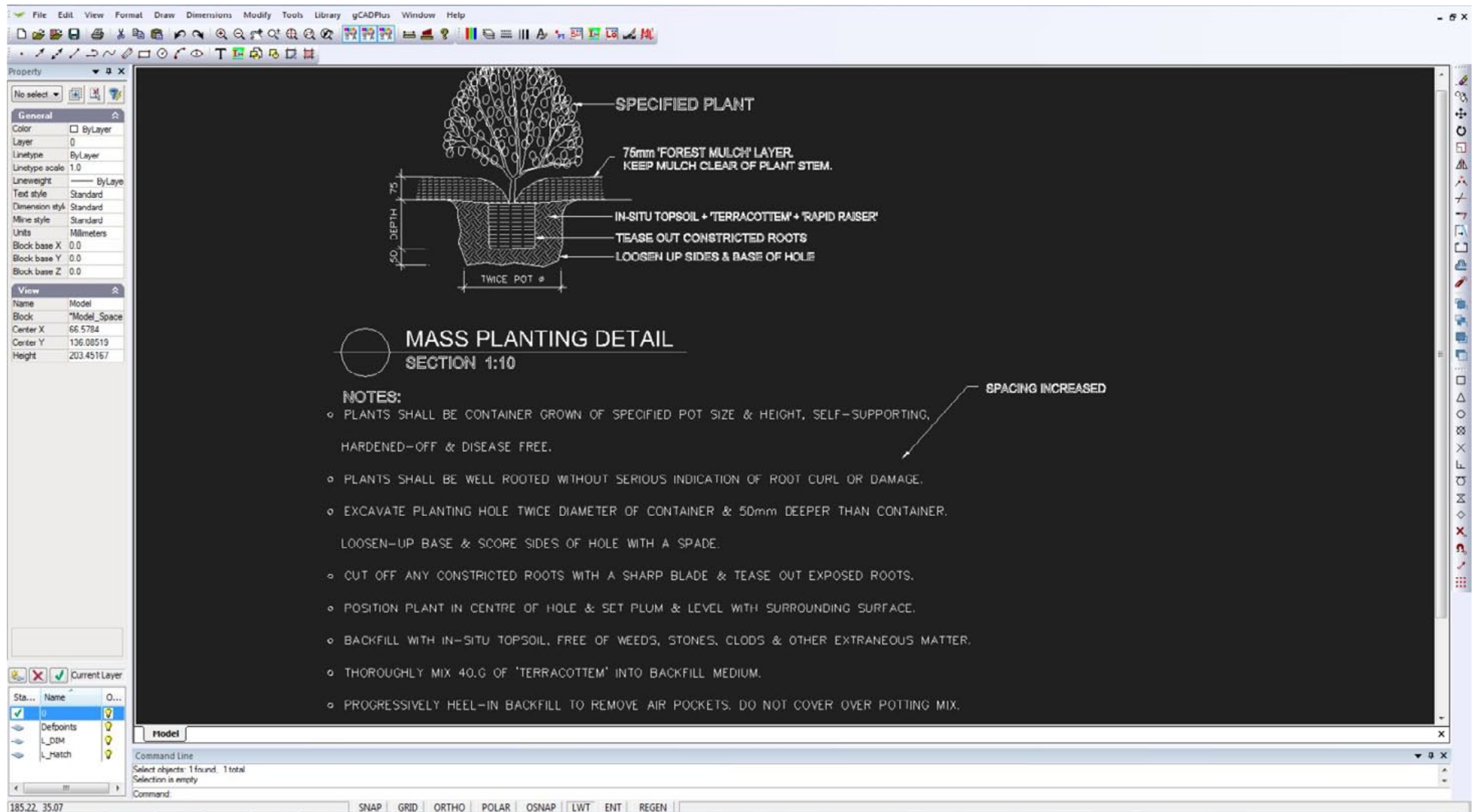
These rather obscure control codes are used by AutoCAD. gCADPlus users commonly interact with drafters who use AutoCAD - Surveyors, architects and civil engineers and we maintain compatibility in this way. At some future date, we hope to have developed an MTEXT editor that allows seamless insertion of the codes.

MTEXT spacing

A block of MTEXT is a gCADPlus object and it is possible to change such things as line spacing and rotation using settings in the properties box associated with the entity.



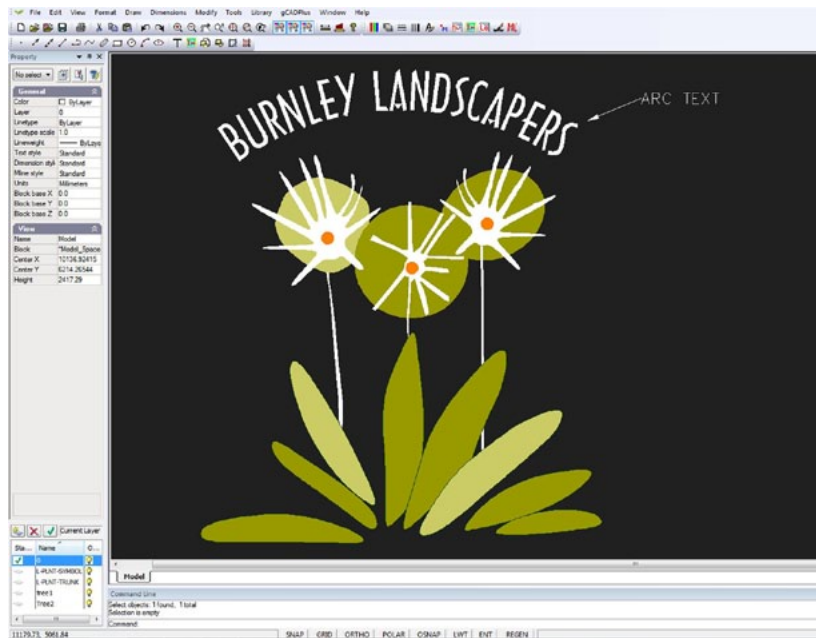
Alter the size of the MTEXT box by dragging the handles.



Change the mtext line spacing setting in the Properties box.

Arc text

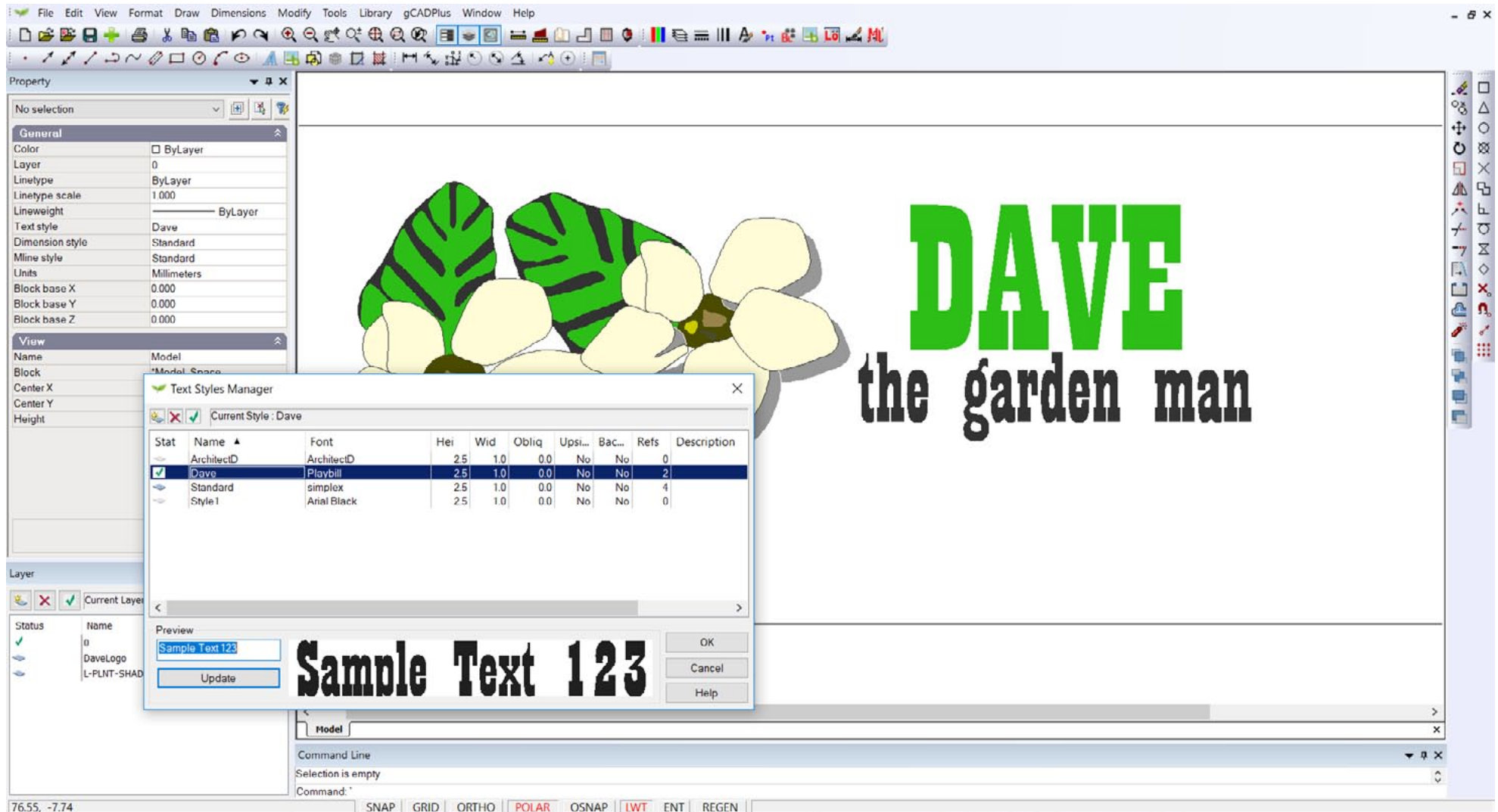
This option allows text to be set around an arc or circle. It is commonly used in the creation of logos. The command starts by 'throwing up' the arc text dialog box, type in the desired text and set desired options for the placement of the text. The current text style must be created with Windows font for this to work.



True Type Text

This option has been provided in order to allow any Windows True Type font to be used in a drawing. Provided that the font is installed in the Windows fonts folder, then a text style can be associated with that font can be used

We see this option being used whenever there is a particular need to match an uncommon font. This often occurs where a landscape practice has an existing logo that uses an unusual True Type font. The WTEXT command enables font matching.

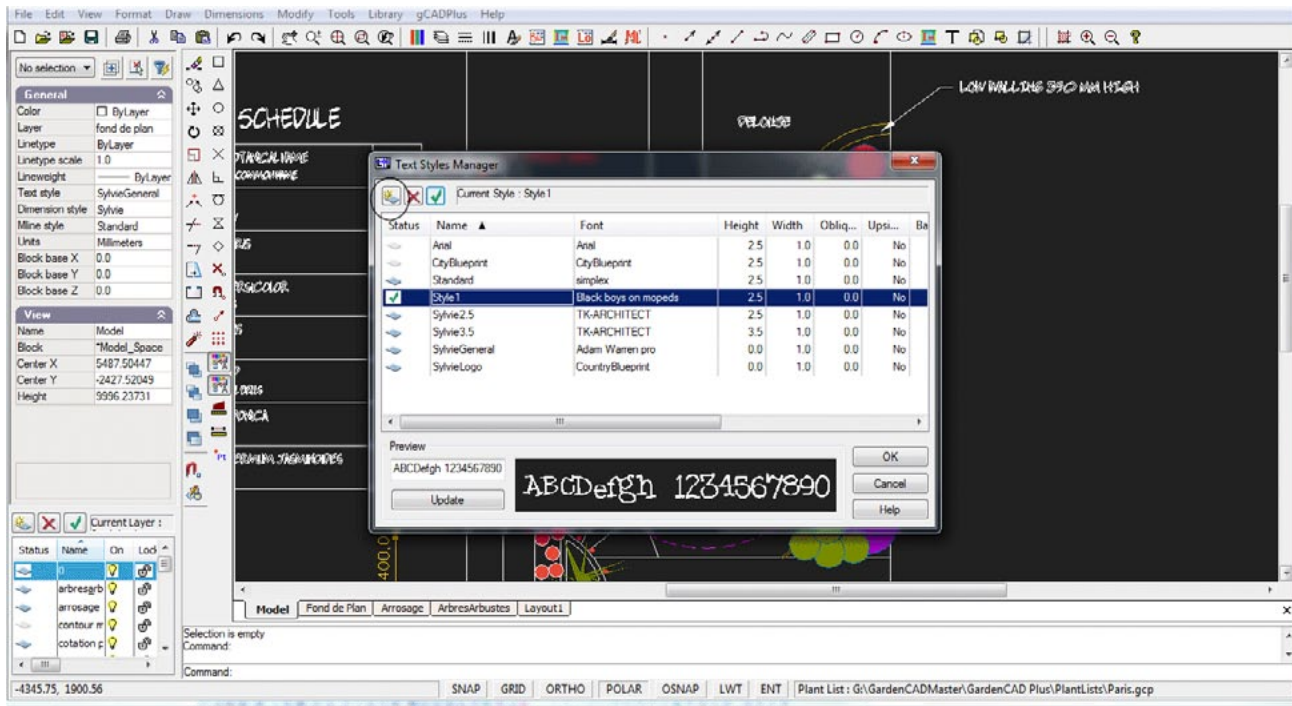


Revisiting text styles

gCADPlus allows you to define one or more text styles, each with a name and particular attributes (e.g. spacing, size etc.). A text style can be created using CAD or Windows fonts already installed in your computer or from True Type fonts downloaded from the Internet.

Tip: It is recommended that a restricted set of styles be used as using a multitude of fonts in a drawing can detract from the presentation. Try and settle on a single text style, making sure that the one style (using a hand written Windows font) becomes our 'signature' style for labeling your drawings.

A note on fonts available in the gCADPlus environment



It is important to understand that a number of different font types are available for placing text into a drawing, whether the text being applied is single-line, multi-line, arc or Windows True Type text.

The figure below shows some **embedded fonts** at the top of the list (these are part of gCADPlus and can never be removed - they remain available even if the gCADPlus fonts folder is deleted). The remainder of fonts shown in the figure (the fonts with the divider icon alongside) are **gCADPlus CAD fonts**. These latter fonts are loaded from the gCADPlus fonts folder when gCADPlus loads.

If you scroll further down the list, a series of **Windows True Type fonts** will show.

Don't forget it is possible to create a text style using an embedded font, a CAD font or a Windows True Type font.

Hand lettered fonts

Most landscape designers prefer to use a font that mimics the type of lettering they already use in their hand drawn plans. The figure shows some hand lettered CAD fonts being used in a gCADPlus drawing. We purchased several shown below from a supplier on the Internet.

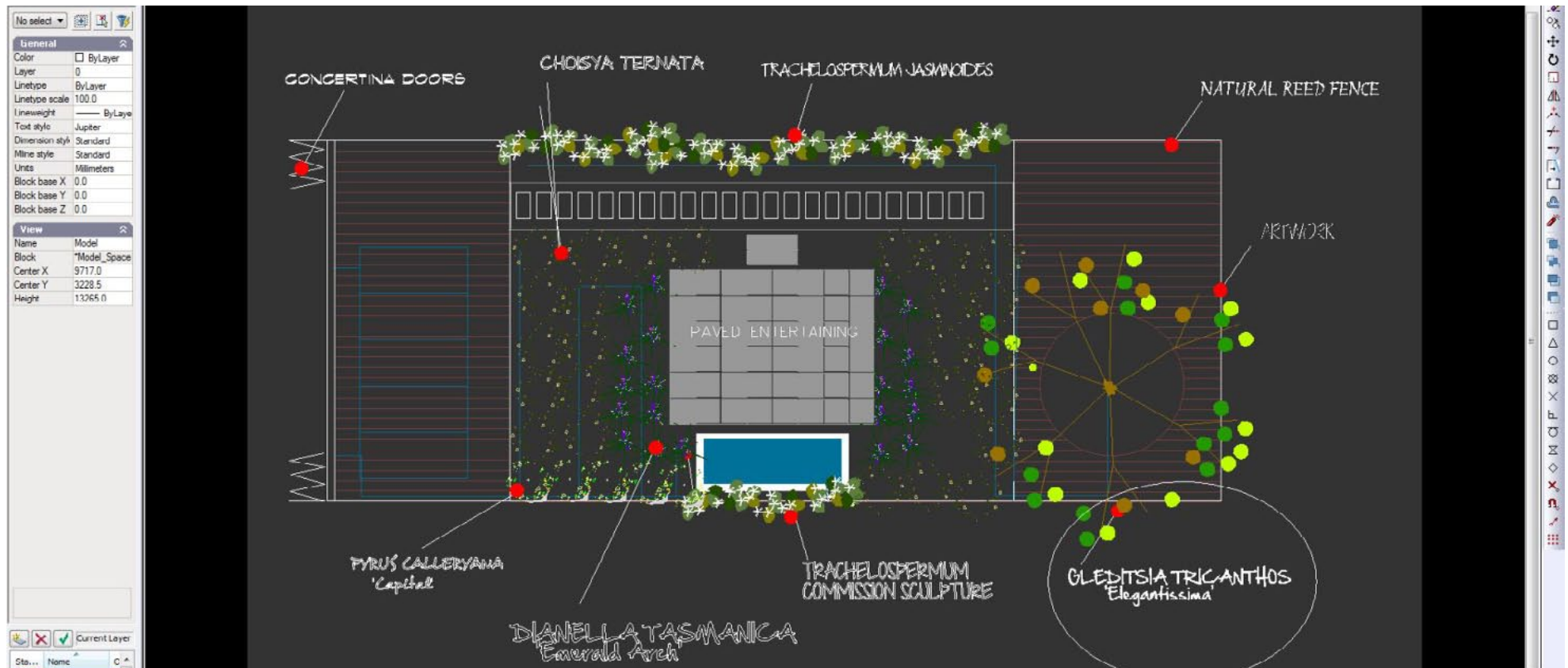
Creating a text style

It is recommended that gCADPlus users develop (and set as the default in their own template drawing), their own particular lettering style by creating a named style with a selected a Windows font.

Here are the steps to take when creating a new text style:

- From the Format drop down menu>Text Styles>Select New Style;
- Text style new;
- Type the name of style, select the font to be used and nominate the height.;

Tip: When you have made a new style, make sure that it is set at current.



Test possible fonts

The figures here show some different Windows fonts tested by one designer before settling on a style that gave the desired 'look and feel'. Testing was done by making a plant schedule with a named style, and then redefining the style using a number of different (free) Windows hand lettered fonts downloaded from the net. The plant schedule was printed to PDF after each test and the results shown below. The name of the font is printed under each plant schedule.

Tip: It is important to do this print testing as some fonts give a much better print result than others. There is also a big difference in spacing.

Pre loaded styles and templates

A number of styles are pre-loaded in some of templates and you can access them by the Text Styles link on the Format menu. However, it is recommended you to use this tool to define your own text styles in your templates

the
that
own

PLANT SCHEDULE

Plant	No	Botanical Name Common Name	Total
	1	Aster spp Aster 'Cultivars'	2
	2	Calluna vulgaris Heather	6
	3	Epimedium versicolor Fleurs des Elfes	12
	4	Erica ciliaris Erica	3
	5	Heuchera spp Alum Root, Coral Bells	10
	6	Lonicera japonica Japonica	5
	7	Trachelospermum jasminoides Star Jasmine	1

LEHN257

PLANT SCHEDULE

Plant	No	Botanical Name Common Name	Total
	1	Aster spp Aster 'Cultivars'	2
	2	Calluna vulgaris Heather	6
	3	Epimedium versicolor Fleurs des Elfes	12
	4	Erica ciliaris Erica	3
	5	Heuchera spp Alum Root, Coral Bells	10
	6	Lonicera japonica Japonica	5
	7	Trachelospermum jasminoides Star Jasmine	1

BRUBECK

PLANT SCHEDULE

Plant	No	Botanical Name Common Name	Total
	1	Aster spp Aster 'Cultivars'	2
	2	Calluna vulgaris Heather	6
	3	Epimedium versicolor Fleurs des Elfes	12
	4	Erica ciliaris Erica	3
	5	Heuchera spp Alum Root, Coral Bells	10
	6	Lonicera japonica Japonica	5
	7	Trachelospermum jasminoides Star Jasmine	1

ARCHITECTS DAUGHTER

PLANT SCHEDULE

Plant	No	Botanical Name Common Name	Total
	1	Aster spp Aster 'Cultivars'	2
	2	Calluna vulgaris Heather	6
	3	Epimedium versicolor Fleurs des Elfes	12
	4	Erica ciliaris Erica	3
	5	Heuchera spp Alum Root, Coral Bells	10
	6	Lonicera japonica Japonica	5
	7	Trachelospermum jasminoides Star Jasmine	1

BLACK BOYS ON MOPEDS

PLANT SCHEDULE

Plant	No	Botanical Name Common Name	Total
	1	Aster spp Aster 'Cultivars'	2
	2	Calluna vulgaris Heather	6
	3	Epimedium versicolor Fleurs des Elfes	12
	4	Erica ciliaris Erica	3
	5	Heuchera spp Alum Root, Coral Bells	10
	6	Lonicera japonica Japonica	5
	7	Trachelospermum jasminoides Star Jasmine	1

BRADLEY HAND

PLANT SCHEDULE

Plant	No	Botanical Name Common Name	Total
	1	Aster spp Aster 'Cultivars'	2
	2	Calluna vulgaris Heather	6
	3	Epimedium versicolor Fleurs des Elfes	12
	4	Erica ciliaris Erica	3
	5	Heuchera spp Alum Root, Coral Bells	10
	6	Lonicera japonica Japonica	5
	7	Trachelospermum jasminoides Star Jasmine	1

ARCHITEXT